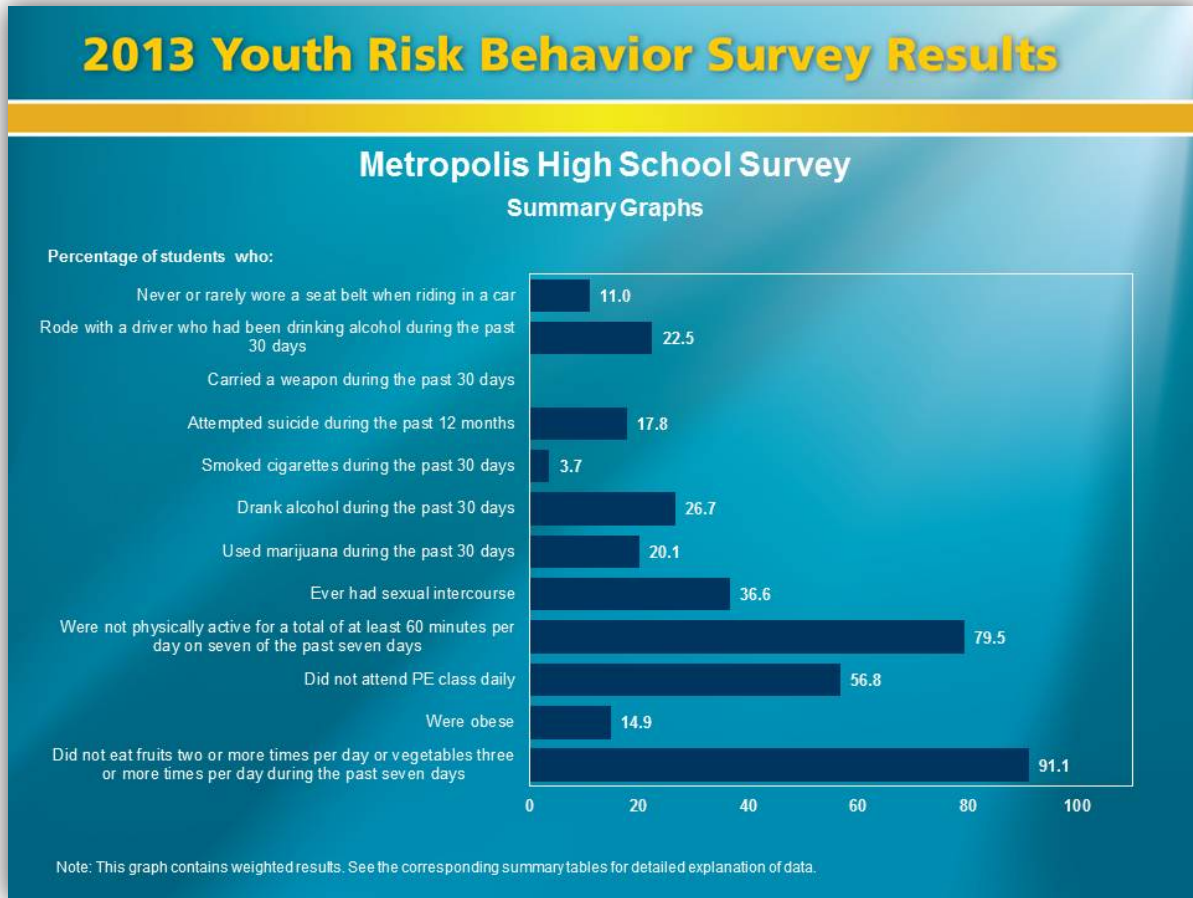


Summary Graphs Documentation

Purpose Summary Graphs are four bar charts representing results in both the “less risk” and “greater risk” directions for selected risk behaviors

Example



2013 YOUTH RISK BEHAVIOR SURVEY

Each graph describes results for the same 12 variables.

Graph	Content
1	Shows the number of students in a “class of 30” that reported each behavior.
2	Shows the number of students in a “class of 30” that reported not doing each behavior.
3	Shows the percentage of students that reported each behavior.
4	Shows the percentage of students that reported not doing each behavior.
